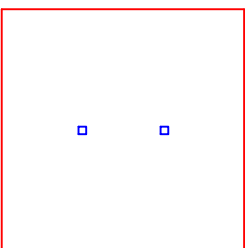


BAKER
ARCHITECTS INC.

PO BOX 2015
PHILADELPHIA, PA
19104
TELEPHONE 215-482-8779
FACSIMILE 215-482-8181

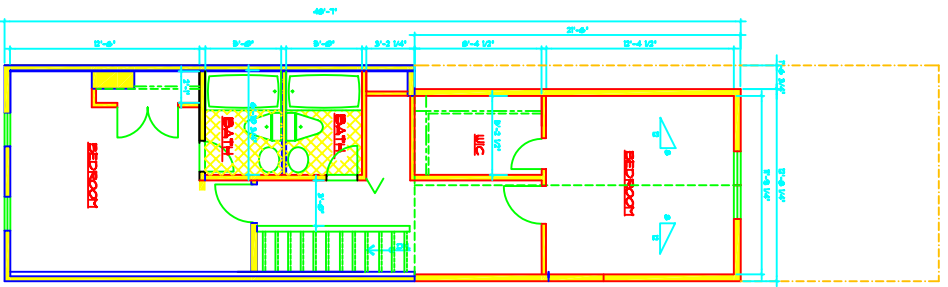
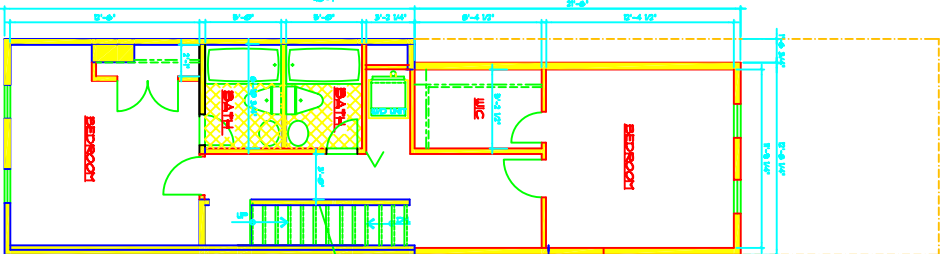
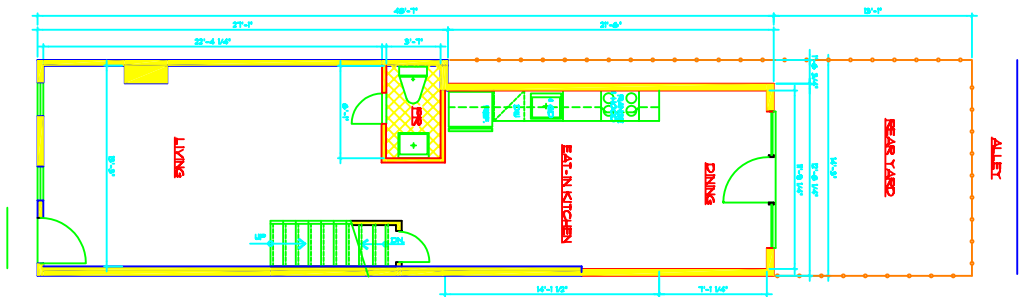


**RENOVATIONS
THIRD FLOOR
FOR
SINGLE-FAMILY
RESIDENCE
FOR:
2541 E. EMERALD ST.
PHILADELPHIA, PA**

| NO. | DATE | REVISION | BY |
|-----|----------|-------------------|-----|
| 1 | 11/19/08 | ISSUE FOR PERMITS | BAK |
| 2 | | | |
| 3 | | | |
| 4 | | | |
| 5 | | | |
| 6 | | | |
| 7 | | | |
| 8 | | | |
| 9 | | | |
| 10 | | | |

| NO. | DATE | REVISION | BY |
|-----|----------|-------------------|-----|
| 1 | 06-20-08 | ISSUE FOR PERMITS | BAK |
| 2 | | | |
| 3 | | | |
| 4 | | | |
| 5 | | | |
| 6 | | | |
| 7 | | | |
| 8 | | | |
| 9 | | | |
| 10 | | | |

FLOOR PLANS
BASEMENT FLOOR PLAN
SECOND FLOOR PLAN
THIRD FLOOR PLAN



1 BASEMENT PLAN
SCALE: 1/4" = 1'-0"

2 FIRST FLOOR PLAN
SCALE: 1/4" = 1'-0"

3 SECOND FLOOR PLAN
SCALE: 1/4" = 1'-0"

4 THIRD FLOOR PLAN
SCALE: 1/4" = 1'-0"